

PROSPECTUS 2027



Empowering Minds Shaping Futures

Onehunga
High School



Personalised, knowledge-rich curriculum centred on academic excellence to enable every student to achieve their aspirations at Onehunga High School and beyond.



Contents

04	PRINCIPAL'S WELCOME
05	ACADEMIC EXCELLENCE
06	NCEA RESULTS
07	TERTIARY SCHOLARSHIPS RESULTS
08	ACADEMIC ACHIEVEMENT
09	COURSE PATHWAYS
10	JUNIOR CURRICULUM
12	SENIOR CURRICULUM
14	LEARNING CULTURE & VALUES
15	SUPPORTING OUR LEARNERS
16	SPORTING EXCELLENCE
18	ARTS & CULTURE
20	CO-CURRICULAR OPPORTUNITIES
21	INTERNATIONAL DEPARTMENT
22	STUDENT LEADERSHIP





Nau Mai, Haere Mai

WELCOME TO ONEHUNGA HIGH SCHOOL

Onehunga High School was founded in 1959 to serve its local community. We have a strong tradition of success inside and outside the classroom. With a steady roll of 1000, we have capitalised on the size of our school to develop a unique personalised mentoring system which supports each student to pursue their goals with confidence to ensure they reach their full potential.

Our quality teaching seeks to instil a love of learning, intellectual curiosity and the ability to learn independently. We ensure successful outcomes for all students by challenging learners with high academic standards, inspiring teaching, personalised learning

and purposeful curriculum. The Onehunga High School curriculum delivers broad learning opportunities with quality pathways - academic subjects sit alongside our extensive pathways programme.

The school prides itself on its exemplary care of its students, while insisting on the highest standards of behaviour and discipline. We have a safe environment where students experience meaningful and positive relationships with each other and their teachers. They are respected for who they are and celebrated for what they achieve.

Onehunga High School has a proud history of success. Many of our families have long histories in the area, and we have many second and third generation students, which gives the school a strong sense of tradition and continuity. Belonging to a community where dreams are realised, purpose is discovered and service to others is a natural occurrence, makes Onehunga High School a standout learning experience.

We look forward to welcoming you into our learning community.

SHAMEEN HAYAT | Principal





Academic Excellence

Academic excellence at Onehunga High School is supported by a coherent five year learning pathway. In the junior school students develop strong knowledge and skills across core learning areas. From Year 11 they begin to specialise as they work towards NCEA, selecting courses that reflect their interests and future goals.

Advanced learning programmes offer enrichment and acceleration at all year levels, extending learning in a range of subjects. In 2025 our students were awarded close to three hundred thousand dollars in university and tertiary scholarships, reflecting the strength of achievement across the school.

Students can choose from academic courses and applied programmes such as catering and hospitality or the Year 13 building course where a house is constructed on site. Specialist academies in sport, health science and business connect learning with real world pathways and further study options.

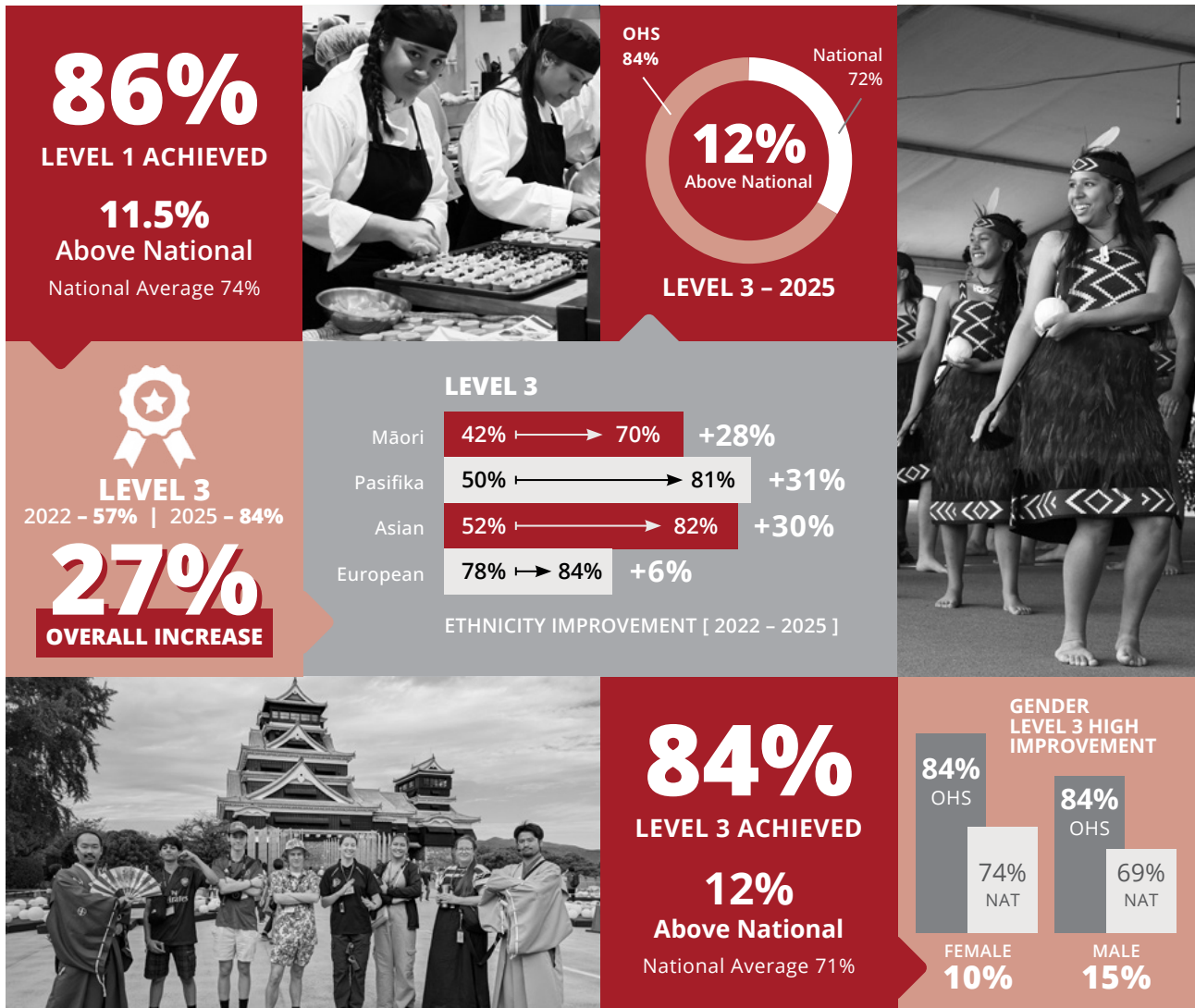


NCEA Results

We are proud of the school's strong 2025 NCEA results, which demonstrate high levels of achievement across the senior school. Our outcomes at both Level 1 and Level 3 are well above national performance, reflecting the sustained effort of our students and the strength of our teaching programmes.

At Level 1, 86% of students achieved the qualification. Nationally, Level 1 achievement sat at around 70%, following the introduction of new literacy and numeracy requirements. Our strong result shows that students at our school are gaining the essential skills needed for success as they move into their senior studies. At Level 3, 84% of students achieved the qualification, compared with a national rate of approximately 71%.

This demonstrates that our students are completing their schooling well prepared for university, apprenticeships and meaningful employment. These outcomes highlight a school culture where academic progress is closely supported, expectations are high and students are encouraged to strive for excellence. We are proud of these achievements and look forward to building on this success in the coming year.



Tertiary Scholarships Results

We congratulate our students on their outstanding scholarship success across New Zealand universities and tertiary providers. These awards recognise excellence, leadership, service and future potential.

University of Auckland

Jacob Cooper
Top Achiever Scholarship

University of Waikato

Jacob Cooper
Te Paewai o te Rangi Scholarship for Outstanding Academic Achievement

University of Otago

Daiana Radrole
Pacific Peoples' Entrance Scholarship

Madeleine 'One'one
Pacific Peoples' Entrance Scholarship
Mana Pasifika Scholarship

Vaitofiga Anesone
150th Entrance Scholarship

Elsie Woodward
Leaders of Tomorrow Scholarship

Jasmine Swords
Vice-Chancellor's Scholarship

Victoria University of Wellington

Vinnie Carter
Pakohe Sustainability Scholarship

Massey University

Jasmine Swords
Undergraduate First-Year Scholarship – School Leavers

Rosie Taylor
Undergraduate First-Year Scholarship – School Leavers

Sarah Mata
Pacific Science and Technology Scholarship

University of Canterbury

Emilie Sargent
Tait Foundation Women in Engineering Scholarship

New Zealand School of Tourism

Ella Pulepule
Future Study Scholarship

Scholarships

John Than Lal
Community and Trust Scholarship

John Than Lal
Kingdom Legacy Trust Scholarship

Chalotte Lilo
Onehunga Youth Trust Scholarship

Laura McFelin
Alan Haskell Memorial Scholarship

Semisi Vaotangi
Alan Haskell Memorial Scholarship

Jethro Jones
Alan Haskell Memorial Scholarship

Stevie Lee
Alan Haskell Memorial Scholarship

Stevie Lee
Dennie Walls Endeavour Scholarship

Briana O'Sullivan
Fred McKeever Memorial Scholarship

Jack Graham
West Island Scholarship

Awards

Khushi Khushi
Dr Peter Norrie Award

Holly van Dolleweerd
Ara Fine Arts Award

**Benjamin Akaruru
Maconi Sifheone
Loseli Latu
Philadelphia Uki**
Maungakiekie Rotary Club Building and Construction Awards

Lincoln Segi
Hikoki NZ award

Lile-Rose Sinisa
Paslode NZ Award

Etuini Lalakai
Health Science Academy Scholarship
Academic Award

Vaitofiga Anesone
Health Science Academy Scholarship
Academic Award

Daiana Radrole
Health Science Academy Scholarship
Pasifika Service & Leadership Award

Nitish Kumar
Health Science Academy Scholarship
Pasifika Service & Leadership Award

Jasmine Swords
Health Science Academy Scholarship
Top HSA Student for Year 13





Academic Achievement

Students at Onehunga High School study a wide range of NCEA subjects at all levels, with opportunities for extension and, where appropriate, Scholarship. Our focus is on ensuring every student gains meaningful qualifications and is well prepared for future tertiary study, training, or employment.

OHS graduates progress to universities, polytechnics, trades, and industry training programmes across Aotearoa and overseas. Many students gain entry to competitive courses each year, reflecting their effort and the strong teaching and guidance provided throughout their time at school.

Academic success is recognised through our annual Senior and Junior Prizegivings, where students are acknowledged for excellence, progress, effort, and contribution across all learning areas. These events celebrate the achievements of individuals and the shared commitment to learning that is central to the OHS community.



Course Pathways

LEARNING AREAS	YEAR 9	YEAR 10	YEAR 11	YEAR 12	YEAR 13
ENGLISH	English	English	English Scholarship English	English English with Literacy Focus Scholarship English	English English with Literacy Focus Scholarship English
MATHEMATICS & STATISTICS	Mathematics	Mathematics	Mathematics	General Mathematics Mathematics with Algebra	General Mathematics Mathematics with Calculus Mathematics with Statistics
SCIENCE	Science	Science	Life Science Physical Science	Biology Chemistry Physics Earth & Space Science	Biology Chemistry Physics Earth & Space Science
SOCIAL SCIENCE (includes Business and Media)	Social Studies	Social Studies Business Studies Media Studies	Commerce Digital Technologies Geography History Media Studies	Accounting Business Studies Economics Geography History Media Studies Tourism	Accounting Business Studies Economics Geography History Media Studies Tourism
PHYSICAL EDUCATION & HEALTH	Health Physical Education	Health Physical Education Athlete Development Programme	Health Physical Education	Health Physical Education Physical Training & Sport Studies	Health Physical Education Physical Training & Sport Studies
LANGUAGES	Chinese French Samoan Te reo Māori Tongan	Chinese French Samoan Te reo Māori Tongan	Chinese Samoan Te Reo Māori Māori Performing Arts Tongan	Chinese Samoan Te Reo Māori Māori Performing Arts Tongan	Chinese Samoan Te Reo Māori Māori Performing Arts Tongan
THE ARTS	Visual Arts/"With Flying Colours" Dance & Drama Music Filmmaking	Art Dance Drama Music Photography	Art, Photography & Design Art Visual Dance Drama Music	Design Painting Photography Dance Drama Music	Design Painting Photography Dance Drama Music
TECHNOLOGY	Product Design Architectural Design Master Chef	Product Design Wood Technology Architectural Design Food & Hospitality	Architectural Design Elementary Woodwork Product Design Food and Hospitality	Design & Visual Communication Elementary Woodwork Product Design Food and Hospitality Culinary Arts	Design & Visual Communication Elementary Woodwork Product Design Building & Construction Food & Hospitality Culinary Arts

*Please note that courses offered are subject to student selection numbers



Junior Curriculum

Students in the junior school experience all eight learning areas of the New Zealand Curriculum.

FOUNDATION FOR SUCCESS

Year 9 students study English, Mathematics, Science, Social Studies, Physical Education and Health, and choose options from the Arts, Technology and Languages.

In Year 10 students continue with the core subjects and select from a wider range of options. These choices help them explore areas of interest and prepare for senior pathways.

JUNIOR ENRICHMENT AND ACCELERATION PROGRAMME

In Years 9 and 10, Enrichment Classes provide deeper learning and extended challenges across core subjects. These classes are designed for students who are working well above the expected curriculum level and who benefit from additional complexity, pace, and enrichment in their learning. All learners are capable, and this programme offers an opportunity for those demonstrating advanced understanding to be extended and supported in a way that aligns with their needs, strengths, and readiness for further challenge.



SPORTS ACADEMIES

The Sports Academies support talented Year 9 and 10 students to develop their skills in a chosen sport. The programmes blend practical training with theoretical learning such as fitness, nutrition, game understanding and sport-specific knowledge.

Students are supported academically before school, after school and through their timetabled classes to help them balance training with their wider learning.

Entry is managed through a trial and selection process that identifies students with strong potential and commitment.

HOMEWORK CENTRE

The Homework Centre runs twice a week and provides a calm, structured environment for students to complete classwork and assessments. Teachers are available after school to assist with understanding concepts, organising work and improving assessments. Subject areas also offer tutorials at interval and lunchtime.

EXTENDING ALL LEARNERS

Teachers participate in weekly professional learning focused on effective, evidence based practice. This ensures high quality teaching and supports a learning environment where all students are challenged and encouraged to achieve their potential.



Senior Curriculum

PATHWAYS FOR SUCCESS

Across Years 11 to 13, students engage with an extensive and rigorous programme of study as they work towards NCEA Levels 1, 2 and 3, and may also enter Scholarship examinations. The senior curriculum is designed to provide both depth and breadth, enabling students to pursue subjects that align with their academic strengths, personal interests and long-term aspirations.

In Year 11, students undertake a core programme consisting of English, Mathematics and Science, alongside three additional subjects.

In Year 12, students continue with English and select five further subjects that support emerging academic pathways.

In Year 13, students choose five subjects after completing Level 2, allowing for specialisation and preparation for tertiary study, vocational training or direct employment.

BREADTH OF CHOICE AND ACADEMIC PATHWAYS

A diverse selection of academic, creative and applied subjects allows students to construct personalised programmes of study. Course selection is guided by

academic mentors, deans and specialist staff who advise students on university entrance requirements, subject pathways and long-term career planning. Through this process, students are supported to make informed choices that strengthen their future prospects.

SPECIALIST PATHWAY PROGRAMMES

Students also have access to specialised pathway programmes that integrate academic learning with industry-relevant experience. These include the Business School, Health Science Academy, Building and Construction, and Catering and Hospitality. Each programme offers structured progression, practical application and strong links to tertiary institutions and industry partners. This combination equips students with the knowledge and skills needed for both further study and meaningful employment.

ACADEMIC SUPPORT AND GUIDANCE

Throughout the senior years, students benefit from ongoing academic mentoring, targeted guidance and responsive learning support. This ensures students remain on track with their academic goals and are well prepared for the demands of external assessment, tertiary study and post-school pathways.





RESILIENCE





Our Learning Culture and Values

Onehunga High School is proud of its strong learning culture, where academic achievement is supported by genuine care for every student. We believe all students can succeed when they feel safe, respected, and engaged in meaningful learning. Our teachers are dedicated to delivering a knowledge-rich curriculum and building positive relationships that help students grow intellectually, socially, emotionally, and physically. High expectations and clear routines support students to develop focus, resilience, and confidence in their learning

Our learning culture is grounded in the founding ideals of Loyalty and Courage, expressed in our motto Fide et Virtute. These principles remain central to the identity of OHS. Students are encouraged to remain committed to their goals, support their peers, and approach challenges with determination and integrity. Alongside these founding ideals, our core values guide everyday life at the school:

RESPECT	Whakaute
RESILIENCE	Manawaroa
INTEGRITY	Ngākau Pono
EXCELLENCE	Kairangi

These values shape how students learn, how they work with others, and how they contribute to the wider school community. They are lived in classrooms, in co-curricular activities, and in the expectations we uphold together. At OHS, our values form the foundation of a learning environment where students are supported to achieve, to grow, and to aspire confidently to their futures.

Supporting Our Learners

Onehunga High School is committed to ensuring that every student has the support they need to succeed. We recognise that students learn best when they feel known, valued, and connected, and we have strong systems in place to guide and support them throughout their time at OHS.

Each student is placed in a Kaitiaki class, supported by a Kaitiaki Teacher who acts as a significant adult in the student's school life. This relationship provides a consistent point of contact for guidance, encouragement, and communication with home. Kaitiaki Teachers help monitor progress, support wellbeing, and ensure students feel confident navigating their learning journey.

Our Deans play an important role in overseeing the academic progress, engagement, and wellbeing of students at each year level. They work closely with families, classroom teachers, and support staff to make sure every learner has the appropriate guidance and opportunities to progress.

Students also have access to a range of specialist services. Our qualified Counsellors offer confidential support for personal, social, and emotional matters.

The Health Centre is staffed by registered Nurses, with access to a visiting Doctor for medical support. A School Psychologist is available for additional assessment and guidance where needed. These services work together to help students feel safe, supported, and ready to learn.

We also have dedicated attendance support to help students stay engaged and connected to school. Regular attendance is a key part of student success, and our team works alongside families to remove barriers and promote positive routines.

Support for learning at OHS is built around strong relationships, clear communication, and a commitment to helping every student take pride in their progress. By combining academic guidance, pastoral care, and specialist expertise, we create an environment where all students can grow with confidence.



Sporting Excellence

A CULTURE OF HIGH AMBITION

In recent years, we have made significant strides in building a sports programme that is ambitious, inclusive and continually growing. Students are encouraged to take part, set goals and compete with confidence, whether they are discovering a new sport or working towards elite performance.

Our athletes represent the school with pride and regularly progress to Auckland, regional, national and international levels across a range of codes. Many compete in major competitions in Aotearoa and overseas, reflecting the strength of our programmes and the growing ambition of our sporting culture.





OUTSTANDING FACILITIES

Our sports environment is supported by high-quality facilities that allow students to train and compete to a strong standard. These include:

- **A state-of-the-art gymnasium suitable for both training and competition**
- **Three professionally maintained sports fields, used year-round across multiple sports**
- Outdoor courts and specialised equipment that enhance performance and participation

These facilities reflect our commitment to providing the conditions athletes need to excel.

EXTENSIVE SPORTING OPPORTUNITIES

Onehunga High School offers a wide range of sporting codes. Students can participate in:

Athletics, Badminton, Basketball, Cricket, Cross Country, Football, Hockey, Kilikiti, Netball, Rugby,

Rugby League, Swimming, Squash, Table Tennis, Tag, Tennis, Touch Rugby, Volleyball, Weightlifting, with additional options such as **Golf and Lawn Bowls** depending on interest.

Emerging sports continue to grow, and students engage in Auckland Secondary Schools competitions, tournaments and a variety of training opportunities throughout the year.

ACADEMIES AND SPECIALIST COACHING

To lift performance and strengthen pathways, we have introduced dedicated Sports. These academies provide structured training, leadership development and support for balancing sporting and academic commitments. We have also expanded our coaching team, bringing in specialist coaches across key sports. Their expertise raises expectations, deepens skill development and ensures our athletes receive professional, high-level guidance.



Arts and Culture

PERFORMING ARTS

Performing Arts is a highly valued and successful part of life at Onehunga High School. Students are encouraged to participate, express themselves and develop their creative talents across Music, Dance, Drama and Kapa Haka. Our programmes promote confidence, collaboration and excellence through learning experiences that connect students with industry professionals, community events and real-world performance opportunities.

MUSIC

Students have access to a full and well-supported Music programme that includes itinerant instrumental and vocal lessons, band rehearsals, ensemble work and opportunities to perform throughout the year. Student groups perform at assemblies, concerts, community

events and school showcases, while competitions and festivals offer further opportunities for growth.

Senior students develop portfolios of original compositions as part of their NCEA programme, gaining experience in song-writing, arrangement and music technology. A selected group of junior students take part in the Can You Be a Conductor? initiative – a unique opportunity created through our strong and longstanding partnership with the Auckland Philharmonia Orchestra, allowing young musicians to learn directly from professional conductors and orchestral players.

DANCE

Dance at Onehunga High School offers students practical, hands-on learning informed by industry practice. Students work with professional dancers,

choreographers and guest tutors, including collaborators from the Royal New Zealand Ballet and other leading dance organisations. These engagements expose students to authentic rehearsal processes, technique workshops and performance styles from across the dance industry. Students participate in curriculum performances, assessment evenings and our annual Showcase, building confidence in front of an audience and gaining experience across a range of dance genres.

DRAMA

Drama encourages students to explore ideas, step into new roles and develop confidence through live performance. Students take part in theatre sports, scripted work, devised drama and ensemble training, learning skills in voice, movement, improvisation and stagecraft. The annual senior production is a major highlight that showcases the depth of student talent and creativity within the school.

We maintain strong connections with the performing arts sector, including ongoing partnerships with the Massive Theatre Company and Masked Theatre Productions, giving students access to professional practitioners and authentic learning experiences. Students also attend professional theatre performances as part of their studies, broadening their

understanding of the industry. For those passionate about Musical Theatre, scholarship opportunities are available to participate in National Youth Theatre productions.

KAPA HAKA

Kapa Haka is an important part of our Performing Arts landscape and holds a special place within the cultural identity of the school. Students gain confidence and pride through learning waiata, haka, mōteatea and poi, and the rōpū performs at key school events such as pōwhiri, prizegivings and community celebrations. Kapa Haka strengthens leadership, unity and connection to te ao Māori, and provides a meaningful space for students to develop their cultural knowledge and identity.

POLYFEST AND CULTURAL PERFORMANCE

Every second year, Onehunga High School proudly performs at ASB Polyfest, one of the largest cultural festivals in the world. Alongside Kapa Haka, our students represent a wide range of cultural groups including Cook Islands, India, Philippines, China, Niue, Samoa, Aotearoa and Tonga. Polyfest provides an extraordinary platform for students to celebrate culture, identity and community through language, movement and performance.



Co-Curricular Opportunities

SPORT

Volleyball
Athletics
Waterpolo
Archery
Waka Ama
Badminton
Basketball
Basketball Academy
Cricket
Cross Country
e-Sport
Football
Football Academy
Futsal
Hockey
Kilikiti
Mountain Biking
Netball
Orienteering
Rugby
Rugby Academy
Running Club
Swimming
Table Tennis
Tag
Tennis

PERFORMING ARTS & ARTS

Brass Band
Choir
Concert Band
Jazz Group
Contemporary Bands
String Orchestra
Wind Ensembles
Music Tuition
Theatre Sports
Drama Productions
Hip Hop Dance
Indian Dance Group
Cultural Dance Groups
OHS Barbershop Quartet
Spoken Word
Dance Groups

CULTURAL GROUPS

Kapa Haka
Samoan Group
Tongan Group
Polyfest Diversity Stage
Cultural Language Week
Bhangra Group
Bollywood Group

Cook Islands Group
Filipino Group
Indian Group
Chinese Group
Niuean Group
Tongan Cultural Group
Additional Polyfest groups (as relevant)

LEADERSHIP, SERVICE & COMMUNITY

Duke of Edinburgh Award
40-Hour Famine
House Committees
Mentoring
Librarians
Rainbow / Diversity Group
Peer Support
Peace Week
Plant Club
School Ball Committee
Young Leaders
Enviro-Club

ACADEMIC EXTENSION & CLUBS

Business Club
Chess Club
Craft Club
Creative Writing Club
Debate Club
Dungeons & Dragons
Hindi Language Club
Maths Club
MUNA (Years 12-13)
Robotics Club
Yoga Sessions
Homework Centre
Maths Competitions
Auckland Mathex
Australian Maths Competition
Writing Competitions
Spoken Word
Writers' Festival
University Maths Competitions





International Department

We value our international students highly and have 30 years of success in educating students from different cultural and ethnic backgrounds.

Our educational approach is holistic, aiming to ensure that international students not only excel academically but also explore their passions in sports, music, and cultural activities. At OHS, we believe in nurturing leadership ability and encouraging community service as integral aspects of student life.

PASTORAL CARE

We run our own homestay programme with the help of our wonderful local families who welcome students into their homes. This provides a secure, caring environment

where students can improve their English language skills and also experience this country's unique culture and hospitality first-hand. If you're interested in becoming a homestay for our international students, please contact international@ohs.school.nz or call our friendly international department staff Ph 021 415 499.

ENGLISH LANGUAGE SCHOOL

Our English language school is designed for adult learners (16 years plus). We offer the "Pathway to English Proficiency" course where learners choose to study part-time or full-time. TEC students are also welcome.





Student Leadership

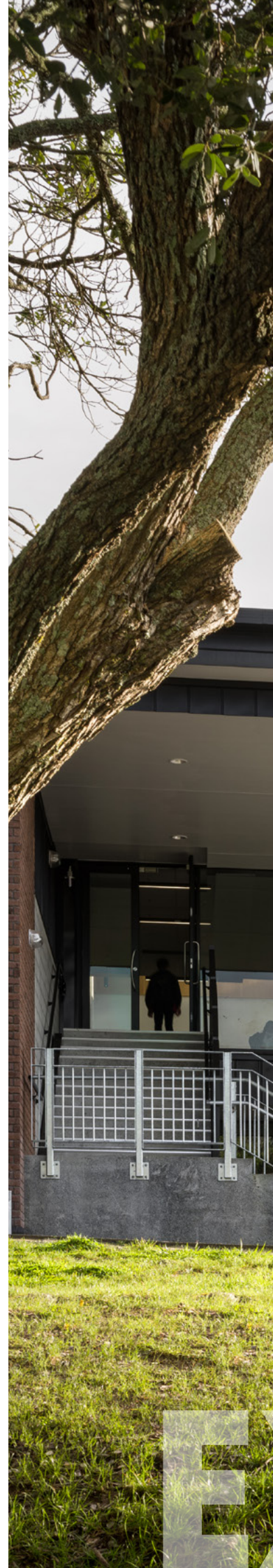
Student leadership is an important part of the culture at Onehunga High School. We aim to develop confident, capable young people who can contribute positively to the school and wider community. Leadership development begins at the junior level, with opportunities to build communication, teamwork, and responsibility, and continues through to senior roles that require initiative, service, and strong personal character.

To support this pathway, leadership opportunities extend across all year levels. Junior students can take part in the Junior Leadership Programme, which introduces leadership principles and builds confidence through guided activities and mentoring. Year 12 students also contribute as Peer Support Leaders, playing an important role in helping Year 9 students transition into high school and fostering a welcoming and inclusive environment.

At the senior level, Year 13 Prefects provide leadership across the school. Prefects are selected for their character, reliability, and commitment to school values. They assist with school events, represent student voice, and mentor younger leaders as part of their role. In addition to these roles, student leadership is strengthened through six student-led councils, which give students the opportunity to lead initiatives and support key areas of school life. The councils are:

ACADEMIC	HAUORA
ARTS	SERVICE
CULTURAL	SPORTS

These councils plan events, promote student engagement, and contribute to the academic, cultural, social, and physical wellbeing of the school community. Through these opportunities, students gain practical experience in organising activities, working collaboratively, and supporting the success of their peers. Together, these pathways create a leadership structure that encourages students to grow, contribute, and develop skills that will support them beyond their time at Onehunga High School.





XCELLENCE



Onehunga High School

LOYALTY & COURAGE

Founded 1959

24 Pleasant Street, Onehunga, Auckland 1061, New Zealand

P | +64 9 636 6006 E | generalenquiries@ohs.school.nz

www.ohs.school.nz