



OHS Board Update 13 June 2025

Driving Excellence and Equity Through Our Strategic Vision

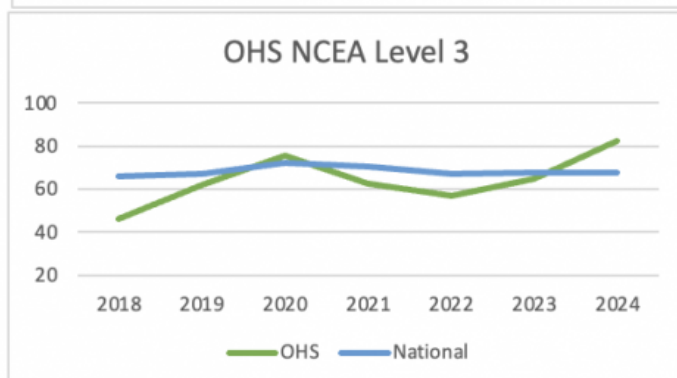
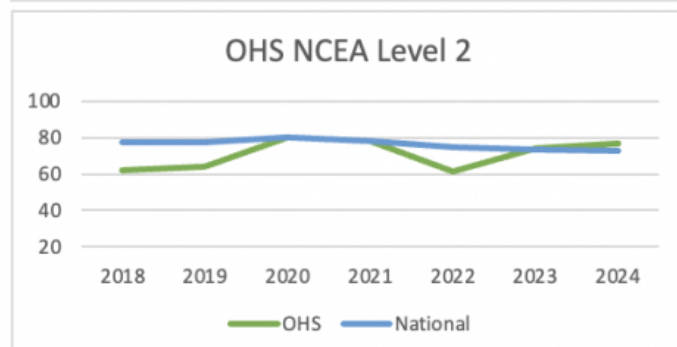
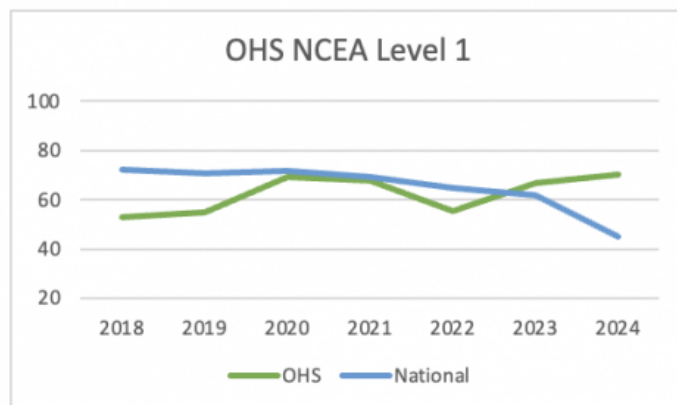
The Onehunga High School Board is proud to share a summary of the significant progress made under our three year strategic plan 2024-2026. The positive momentum in our school is a direct result of a clear, board-driven vision focused on fostering excellence, ensuring equity, and enhancing the wellbeing of every student. We believe the following achievements demonstrate the success of our strategic direction and the importance of focused and effective governance and school leadership.

The 2024 academic results are a testament to this commitment. The Board has maintained a strong focus on student achievement, and we are delighted to report NCEA pass rates of 71% at Level 1, 79% at Level 2, and 82% at Level 3. These figures, which sit significantly above national averages, confirm the strength of teaching and learning taking place at OHS.

We are excited to share that in 2024 our Asian, Māori, European, Pasifika and all ethnicities were **above the national** average for NCEA Levels 1, 2 and 3.

A central pillar of our strategic plan is the accelerated achievement of our Māori and Pasifika students. The Board has supported and resourced targeted programmes aimed at closing achievement gaps and fostering an inclusive culture of success.

The impressive results speak for themselves: Pasifika students achieved 71% at Level 1, 77% at Level 2, and 78% at Level 3. Māori students achieved 69% at Level 1, 65% at Level 2, and an outstanding 87% at Level 3. See the table below for further details.



Pasifika male achievement at NCEA Level 3 has increased significantly over time: 27% in 2017 and 2018, 46% in 2019 and 2022, 62.7% in 2023, and 88% in 2024.

Māori male achievement at Level 3 has followed a similar trajectory: 38.5% in 2017, 13% in 2018, 33% in 2019, 37.5% in 2022, 62.7% in 2023, and 87% in 2024.

These improvements are especially significant given the increased number of Māori and Pasifika males staying through to Year 13 and therefore included in achievement data at each level. They reflect the effective implementation of the Board's strategic vision through strong leadership, academic mentoring, targeted support, and respectful relationships across the school.

Level 1 NCEA OHS Ethnicity Data %							
	2018	2019	2020	2021	2022	2023	2024
Māori	40	46.3	61.1	69.4	49	50	68.8
European	77.4	50	81	89.5	58.3	77.4	70.9
Pasifika	41.5	54.1	60.2	66	53.6	62.8	71.3
Asian	83.3	70.4	86.4	83.3	52.9	70.4	67.5
MELAA	33.3	100	100	75	83.3	28.6	85.7

Level 2 NCEA OHS Ethnicity Data							
	2018	2019	2020	2021	2022	2023	2024
Māori	50	46.9	62.5	65.7	64.3	67.6	64.7
European	75	79.4	67.7	86.2	77.8	84	80.0
Pasifika	54.4	59	81.2	66	50.8	66.7	77.3
Asian	70.4	90.9	85.2	91.3	68.8	73	80.6
MELAA		20	100	85.7	75	83.3	80.0

Level 3 NCEA OHS Ethnicity Data %							
	2018	2019	2020	2021	2022	2023	2024
Māori	26.9	55	65.4	57.1	38.7	60.5	87.1
European	75	77.8	85.7	72.4	76.1	73.7	90.3
Pasifika	35.2	57.5	65.8	54.7	47.3	63.4	78
Asian	62.1	70.4	93.1	77.8	52.2	61.3	73.7
MELAA	100	100	50	66.7	85.7	100	66.7

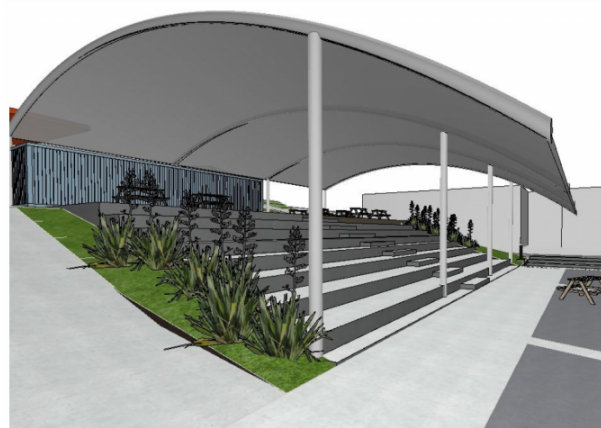
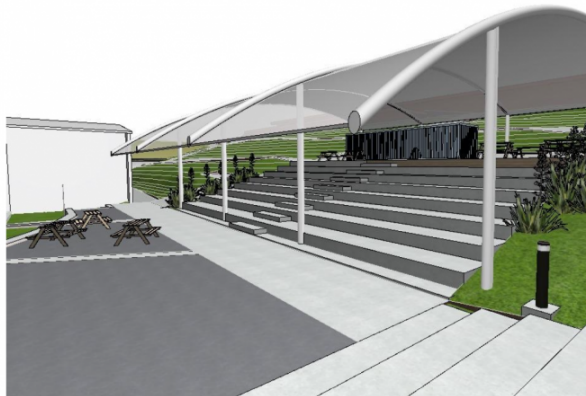
Recognising the need to enrich and stretch for all learners, we are ensuring the school provides appropriate opportunities for acceleration and extension where needed. In 2026, this will include increased scholarship teaching at Level 3 and additional enrichment classes for the junior school.

Beyond academic success, our strategic plan prioritises the creation of a modern, inspiring, and supportive learning environment. The Board has been actively driving a number of key property developments and wellbeing initiatives to ensure our students have the best possible resources and support to thrive. These include:

- Advancing the library rebuild, which is planned to be completed by the start of next year (designs below).



- Scheduling the recladding and joinery replacement of the 22-classroom ABC block for November.
- Refurbishment of Learning Support, to be completed by the end of this year.
- Initiating planning for new covered tiered seating areas to enhance our outdoor learning and recreational spaces (designs below).



In line with our strategic goal of fostering a safe and inclusive school culture, we are pleased to report that stand-down rates at OHS remain lower than pre-COVID levels. The Board has invested in the Positive Behaviour for Learning (PB4L) framework, which has informed the Learning Culture initiative, underpinned by our WAKA values. Our strategic partnership with the University of Waikato to embed restorative practices is now in its second year, significantly enhancing staff capability to build and maintain respectful relationships across the school community.

The progress outlined above reflects the deliberate efforts of a committed Board working with the Principal and staff to implement a clear and forward-looking strategic plan. We are pleased with the gains made to date and remain focused on continuing this momentum to support the ongoing success of Onehunga High School.

Onehunga High School Board